

NOS SHOWROOMS :  
KM 15 RP N°1 AIN HARROUDA CASABLANCA  
44 RTE MADIOUNA SOUK DU BOIS KOREAA CASABLANCA  
61 RUE SOLDAT RAPHAEL MARISCAL AIN BORJA CASABLANCA  
Contact Commercial :  
05 22 28 88 83





HPL



**BIANCA MAROMO**  
Réf. 9611 RS  
9611 SD

**HPL** est en fait l'abréviation de "stratifié haute pression" en anglais. Cela provient du fait que le HPL soit constitué de plusieurs couches qui sont comprimées (ou laminées) sous très haute pression. Il en résulte une feuille très dense, dure et de forme très stable.

#### Recommandé pour



Hôpitaux



Écoles



Salles  
d'exposition



Entreprises



Maison



Cafétérias

#### **BIANCA MAROMO**

FORMAT: 1220MM X 2440MM (RS)

1220MM X 3050MM (SD)

EPAISSEUR: 0.70 MM



Hight Pressure Laminate



## MARRONE MARRO

FORMAT: 1220MM X 2440MM (RS)  
1220MM X 3050MM (SD)

EPAISSEUR: 0.70 MM  
REF 9612 RS  
9612 SD

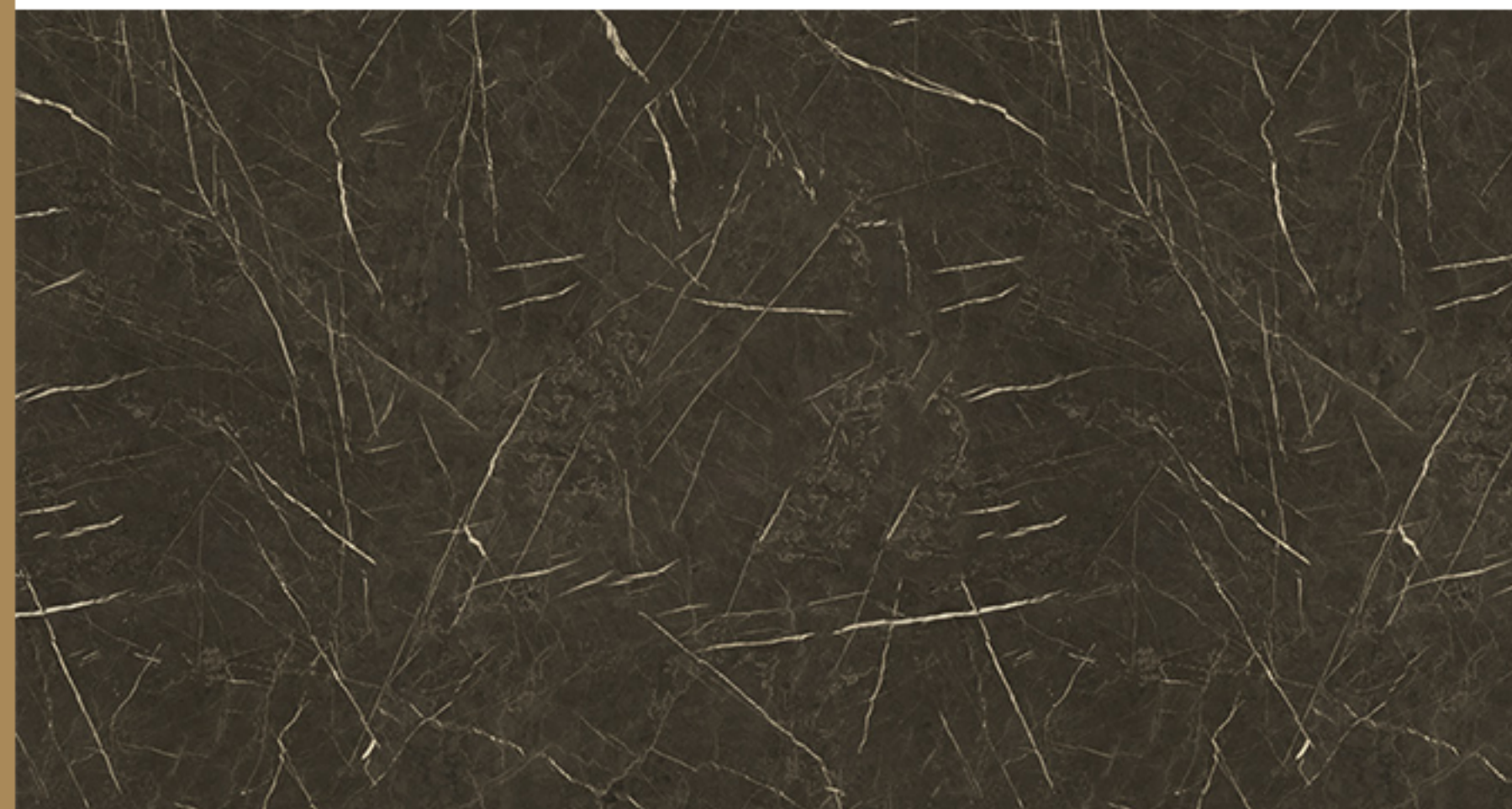


## NERO MARMO

FORMAT: 1220MM X 2440MM (RS)  
1220MM X 2440MM (PU)  
1220mm X 3050MM (SD)

EPAISSEUR: 0.70 MM

REF 9608 RS  
9608 PU  
9608 SD



## VERDE MARMO

FORMAT: 1220MM X 2440MM (RS)  
1220MM X 2440MM (PU)  
1220mm X 3050MM (SD)

EPAISSEUR: 0.70 MM

REF 9609 RS  
9609 PU  
9609 SD



Hight Pressure Laminate



## TRAVERTINE

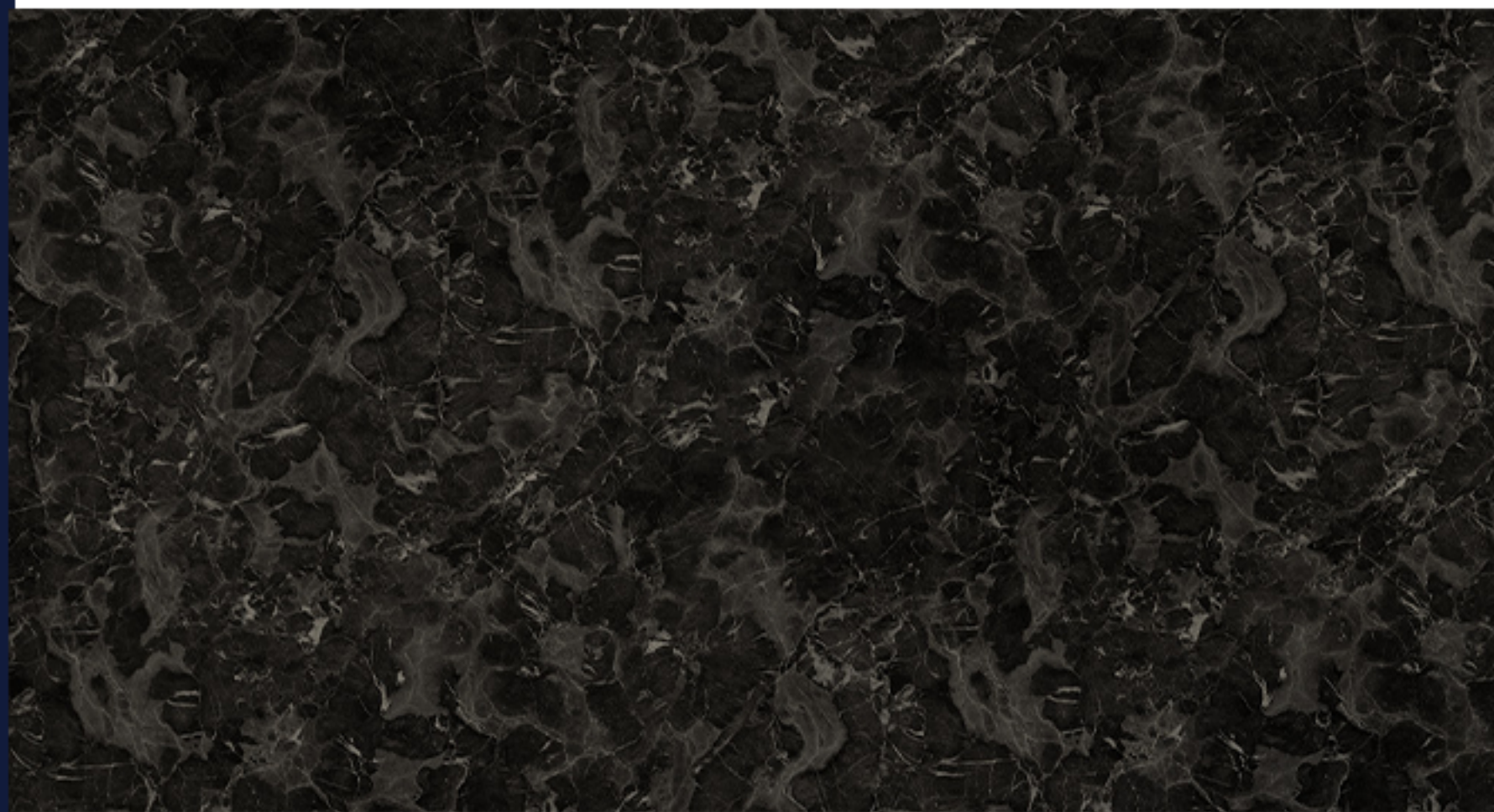
FORMAT: 1220MM X 3050MM (SD)  
EPAISSEUR: 0.70 MM  
REF 9605 SD





### ORIENTAL BROWN

FORMAT: 1220MM X 2440MM (IPL)  
1220mm X 3050MM (SD)  
EPAISSEUR: 0.70 MM  
REF 9601 IPL  
9601 SD



### ORIENTAL GREY

FORMAT: 1220MM X 2440MM (PU)  
1220mm X 3050MM (SD)  
EPAISSEUR: 0.70 MM  
REF 9602 PU  
9602 SD



Hight Pressure Laminate

## METALLIC RUST OXIDE

FORMAT: 1220mm X 3050MM (SD)  
EPAISSEUR: 0.70 MM  
REF 9622 SD





Hight Pressure Laminate

## AUTUMN RUTICO

FORMAT: 1220mm X 3050MM (SD)  
1220MM X 2440MM (NCRT)  
EPAISSEUR: 0.70 MM  
REF 9961 SD  
9961 NCRT



## METALLIC OXIDE

FORMAT: 1220mm X 3050MM (SD)

EPAISSEUR: 0.70 MM  
REF 9921 SD



## COPPER STONE

FORMAT: 1220mm X 2440MM (VST)  
1220MM X 3050MM (SD)  
EPAISSEUR: 0.70 MM  
REF 7652 SD  
7652 VST



Hight Pressure Laminate



## BILING CHERRY

FORMAT: 1220mm X 2440MM (KMT)  
1220MM X 3050MM (SD)

EPAISSEUR: 0.70 MM

REF 9933 SD  
9933 VST

High Pressure Laminate

## RUSSEL PARDO PECAN

FORMAT: 1220mm X 2440MM (MW)  
1220MM X 3050MM (SD)  
EPAISSEUR: 0.70 MM  
REF 9943 SD  
9943 MW



Hight Pressure Laminate

## PEARL NEVADA PINE

FORMAT: 1220mm X 2440MM (MW)  
1220MM X 3050MM (SD)  
EPAISSEUR: 0.70 MM  
REF 9905 SD  
9905 MW



## MIDNIGHT ACIA

FORMAT: 1220mm X 2440MM (BNT)  
1220MM X 3050MM (SD)

EPAISSEUR: 0.70 MM  
REF 7941 SD  
7941 BNT



Hight Pressure Laminate

## SMOKED BROSSE MAPLE

FORMAT: 1220mm X 2440MM (PU)  
1220MM X 3050MM (SD)  
EPAISSEUR: 0.70 MM  
REF 9939 SD  
9939 PU





Hight Pressure Laminate



## DARK GREY

FORMAT: 1220mm X 2440MM (HG)

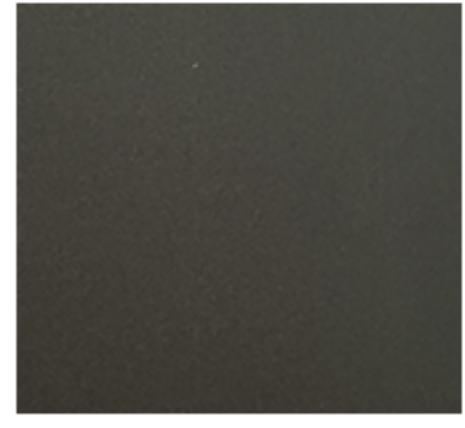
EPAISSEUR: 0.70 MM

REF 1266 HG

# Hight Pressure Laminate



1266 HG



8513 HGS/SF



1234 GL



8518 HGS/SF



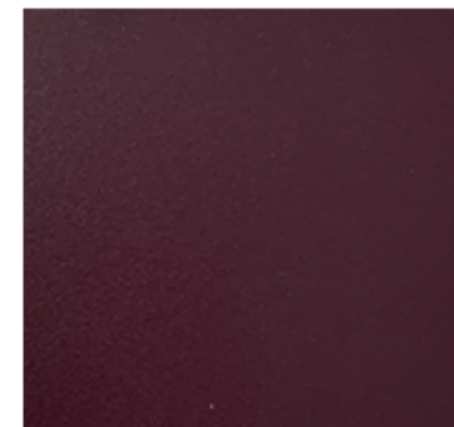
1250 SF



1250 LTH



8510 SF/ HGS



8519 SF/HGS



508 HGS/ SF



1230 LTH



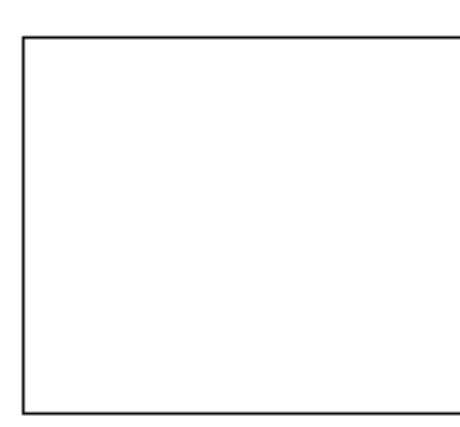
1230 SF



8755 SF



1296 SD/SF



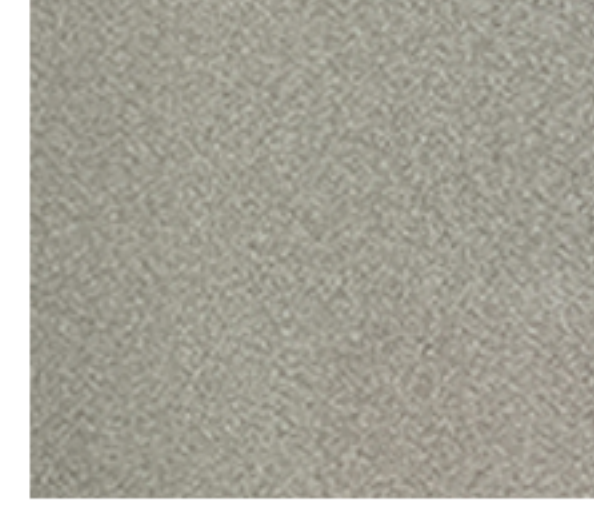
8500 HG/MT  
1001 HG



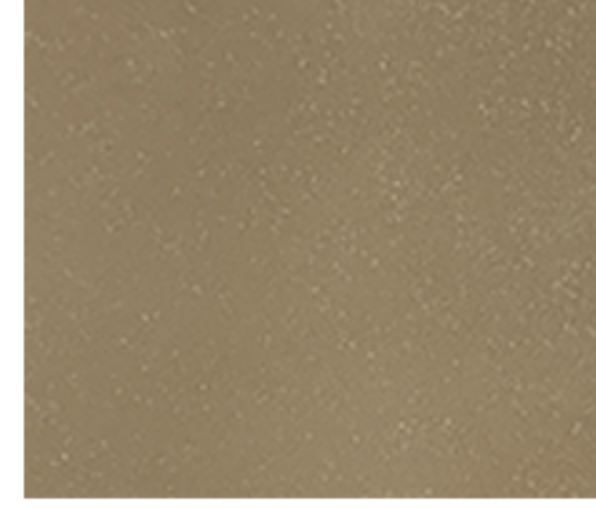
356 SPK



352 SPK



351 SPK



302 SPK



9501 SILVER MT



9505 GOLD FOIL



9507 BRONZE MT

# Hight Pressure Laminate



7933 SPO/SD



7991 SD/NLT



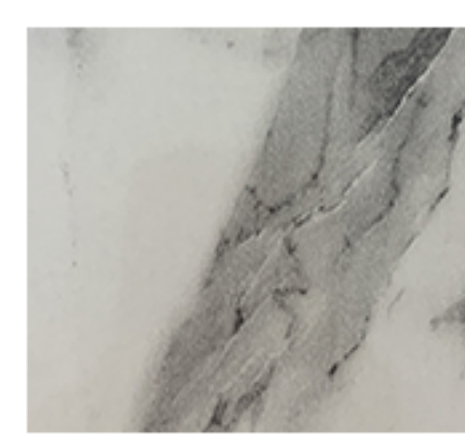
7957 WV



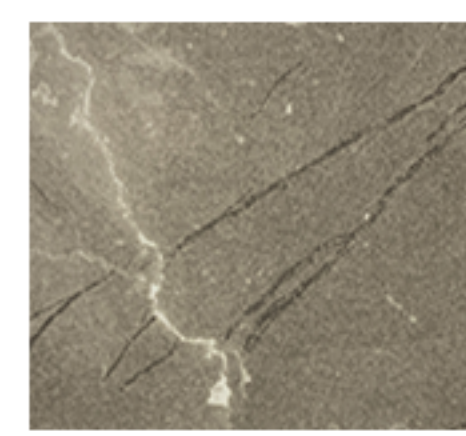
7945 WV/SD



7954 OT/SD



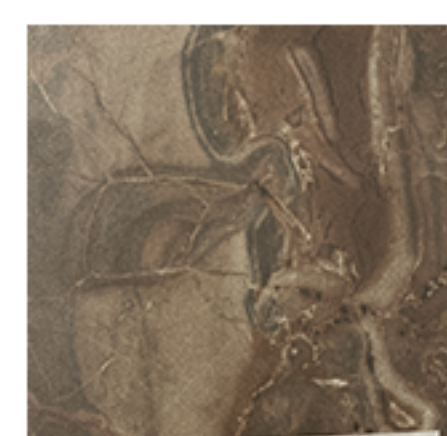
5510 GL



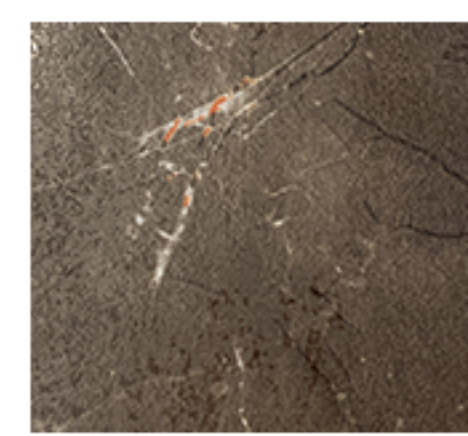
8177 GL



5501 HP32/GL



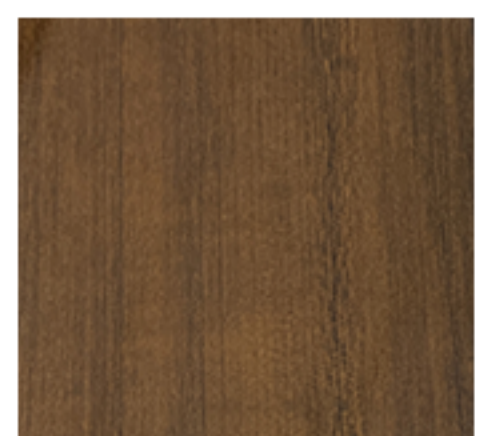
9607 PU/SD



8175 HDU-33/GL



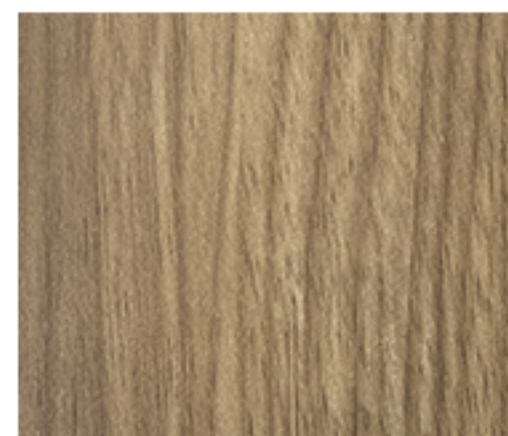
8182 HDU-38



5138 GL



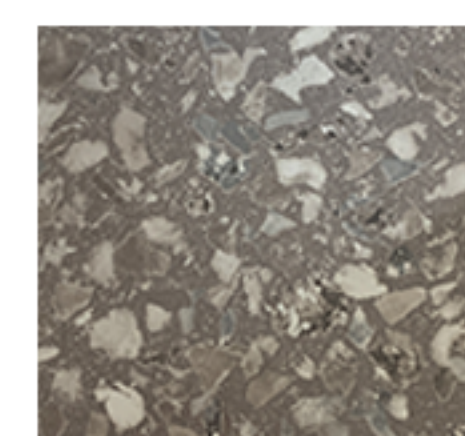
8171 GL



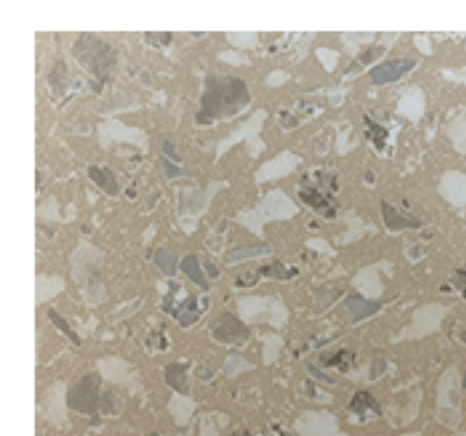
8603 SD



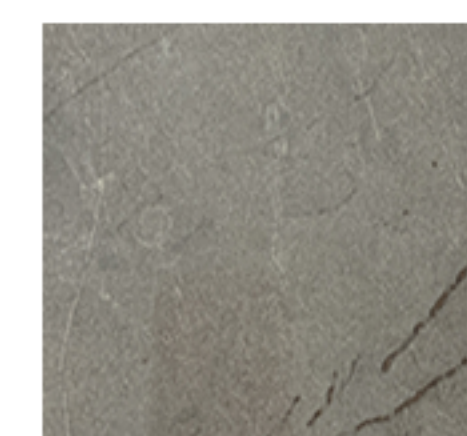
86610 SD



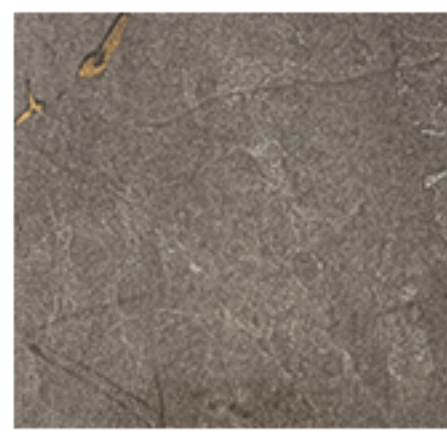
9632 TS/SD



9631 TS/SD



5509 GL



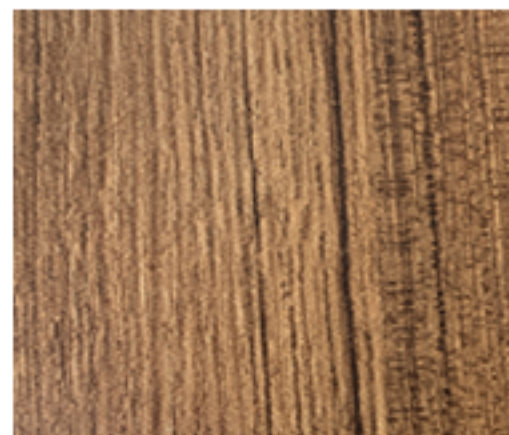
5508 GL



7942 HZ-MACO/SD



8112 GL



8776 SD